

CENTER HANGER STRADDLE MOUNT

BEST SUITABLE : HUTCHENS



SR. NO.	REF. NO.	EUCLID NO.	APPLICATION	O.E.M.
489	FIL 1587	E-9497	H-7700	HUTCHENS 16187-01

REAR HANGER UNDER MOUNT

BEST SUITABLE : HUTCHENS



SR. NO.	REF. NO.	EUCLID NO.	APPLICATION	O.E.M.
490	FIL 1597	E-2915 A	H-7600 H-9600	HUTCHENS 7703-02

REAR HANGER STRADDLE MOUNT

BEST SUITABLE : HUTCHENS



SR. NO.	REF. NO.	EUCLID NO.	APPLICATION	O.E.M.
491	FIL 1607	E-2912 A	H-7700 H-9700	HUTCHENS 7702-02

BUSHING ASSEMBLY

BEST SUITABLE : HUTCHENS



SR. NO.	REF. NO.	EUCLID NO.	INCLUDES	O.E.M.
492	FIL 1617	E-2896	2 E-927 Bushing 2 E-2893 Bolt 1 E-2894 Shaft 2 E-2895 Washer <i>*Note Sold Separately</i>	HUTCHENS 7620-00

TORQUE ARM BUSHING ASSEMBLY

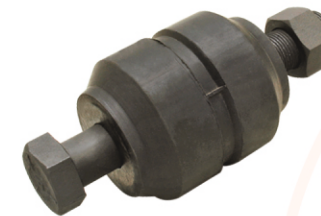
BEST SUITABLE : HUTCHENS



SR. NO.	REF. NO.	EUCLID NO.	INCLUDES	O.E.M.
493	FIL 1627	E-1312 A (RUBBER)	2E-1038 BUSHING 1E-1073 BOLT 2E-1074 WASHER 1E-725 NUT	TR 200

EQUALIZER BUSHING ASSEMBLY

BEST SUITABLE : HUTCHENS



SR. NO.	REF. NO.	EUCLID NO.	INCLUDES	O.E.M.
494	FIL 1637	E-9472 (RUBBER)	1 E-2621 Bushing 1 E-7533 Bolt 1 E-4358 Nut	TR 353542 C 1186126R8 LNC 107 A

BUSHING ASSEMBLY

BEST SUITABLE : HUTCHENS



SR. NO.	REF. NO.	EUCLID NO.	INCLUDES	O.E.M.
495	FIL 1647	E-3079 (RUBBER)	1 E-934 Bushing 1 E-2891 Bolt 1 E-2892 Nut	TRB 6326

EQUALIZER BUSHING

BEST SUITABLE : HUTCHENS



SR. NO.	REF. NO.	EUCLID NO.	O.D.	I.D.	LENGTH	O.E.M.
496	FIL 1657	E-7621 (RUBBER)	3 1/2"	1 1/8"	3 7/8"	HUTCHENS 16146-01

EQUALIZER BUSHING ASSEMBLY

BEST SUITABLE : HUTCHENS



SR. NO.	REF. NO.	EUCLID NO.	INCLUDES	O.E.M.
497	FIL 1667	E-2003 (RUBBER)	1 E-1999A Bushing 2 E-2000 Bolt 1 E-2001 Tab Lock 2 E-2002 Nut	HUTCHENS 7010

TORQUE ARM BUSHING WITH STEEL INSERT

BEST SUITABLE : HUTCHENS



SR. NO.	REF. NO.	EUCLID NO.	DIMENSIONS	O.E.M.
498	FIL 1677	E-934 (RUBBER)	1 29/32" O.D. 1" I.D. 3" Long	HUTCHENS 722-00

RUBBER EQUALIZER BUSHING

BEST SUITABLE : HUTCHENS



SR. NO.	REF. NO.	EUCLID NO.	O.D.	LENGTH	O.E.M.
499	FIL 1687	E-1999 A (RUBBER)	3 1/4"	3 7/8"	HUTCHENS 7010-00

TORQUE ARM BOLT

BEST SUITABLE : HUTCHENS



SR. NO.	REF. NO.	EUCLID NO.	APPLICATION	O.E.M.
500	FIL 1697	E-2891	1"-14THREAD X 5 LONG	HUTCHENS 719-03

FLANGED NUT

BEST SUITABLE : HUTCHENS



SR. NO.	REF. NO.	EUCLID NO.	APPLICATIONS	O.E.M.
501	FIL 1707	E-2892	1" - 14 THREAD X 1 7/16" HEX X 7/8" HIGH	HUTCHENS 10562-00

EQUALIZER BOLT KIT

BEST SUITABLE : HUTCHENS



SR. NO.	REF. NO.	EUCLID NO.	DISCRIPTION	O.E.M.
502	FIL 1717	E-2000	Equalizer Step Bolt 5/8"-18x3/4"x6" Long	HUTCHENS 7016-01
503	FIL 1718	E-2001	Lock Tab	HUTCHENS 00729-00
504	FIL 1719	E-2002	Nut 5/8"-18x15/16" Hex 17/32" High	HUTCHENS 37-03
505	FIL 1720	E-3415	Rebound Bolt 5/8"-18x4 1/2" Long	HUTCHENS 759-00
506	FIL 1721	E-3416	Spacer Sleeve 7/8" O.D. X 2 1/32" I.D. X 3 7/32" O.A.L.	HUTCHENS 756-00

WASHER

BEST SUITABLE : HUTCHENS



SR. NO.	REF. NO.	EUCLID NO.	DIMENSIONS	O.E.M.
507	FIL 1731	E-1074	2 1/2" O.D. 1 1/16" I.D. 1/4" THICK	HUTCHENS 227-00



TORQUE ARMS & BUSHING ASSEMBLY

BEST SUITABLE : FRUEHAUF



SR. NO.	REF. NO.	EUCLID NO.	O.E.M.	EUCLID BUSHING NO.	BUSHING KIT NO.
508	FIL 1741	E-2515	FRUEHAUF UCF-002640-001	E-927	E-1023
509	FIL 1742	E-3763	FRUEHAUF UCF-002640-004		

RIGID

BEST SUITABLE : FRUEHAUF



SR. NO.	REF. NO.	EUCLID NO.	O.E.M.	EUCLID BUSHING NO.	BUSHING KIT NO.
510	FIL 1752	E-2514	FRUEHAUF UXA-000026-001	E-927	E-1023

EQUALIZER BUSHING ASSEMBLY

BEST SUITABLE : FRUEHAUF



SR. NO.	REF. NO.	EUCLID NO.	APPLICATION	O.E.M.
511	FIL 1762	E-1024 (RUBBER)	FOR "F" SERIES, J-2, T-1 & W24T1 AIR RIDE SUSPENSION	FRUEHAUF UXA 0004-900

TORQUE ARM BUSHING ASSEMBLY

BEST SUITABLE : FRUEHAUF



SR. NO.	REF. NO.	EUCLID NO.	APPLICATION	INCLUDES	O.E.M.
512	FIL 1772	E-1023 (RUBBER)	FOR ALL "F" SERIES, J-2, NF-2 & NT SUSPENSION	1E-1018 BOLT 2E-927 BUSHING 1E-1074 WASHER 1E-2833 WASHER 1E-937 NUT	UXA 000011-900



TORQUE ARM BOLT

BEST SUITABLE : FRUEHAUF



SR. NO.	REF. NO.	EUCLID NO.	THREAD	LENGTH	O.E.M.
513	FIL 1782	E-1018	1"-14	6"	FRUEHAUF UXA-000016
514	FIL 1783	E-7637	1"-14	7"	FRUEHAUF UXA-000016-000

SPRING CHAIR

BEST SUITABLE : FRUEHAUF



SR. NO.	REF. NO.	EUCLID NO.	O.E.M.
515	FIL 1793	E-2837	FRUEHAUF UXA-000512-001

SPRING SPACER

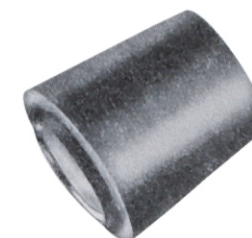
BEST SUITABLE : FRUEHAUF



SR. NO.	REF. NO.	EUCLID NO.	DIMENSIONS	O.E.M.
516	FIL 1803	E-2838	6 1/2" X 3" X 1/2"	FRUEHAUF UXA-000048

EQUALIZER BUSHING

BEST SUITABLE : FRUEHAUF



SR. NO.	REF. NO.	EUCLID NO.	I.D.	O.D.	O.A.L.	O.E.M.
517	FIL 1813	E-1020 (RIBBER)	2"	3 1/2"	4 3/8"	FRUEHAUF UXA-000004