

COMPARISON WASHER

BEST SUITABLE : FRUEHAUF



SR. NO.	REF. NO.	EUCLID NO.	I.D.	O.D.	THICK	O.E.M.
518	FIL 1823	E-1021	1 1/16"	4"	1/4"	UXA-000356-002

EQUALIZER BOLT

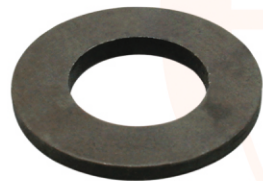
BEST SUITABLE : FRUEHAUF



SR. NO.	REF. NO.	EUCLID NO.	THREAD	O.A.L.	O.E.M.
519	FIL 1833	E-1019	1"-14"	10 9/16"	FRUEHAUF UXA-00015-001

COMPARISON WASHER

BEST SUITABLE : FRUEHAUF



SR. NO.	REF. NO.	EUCLID NO.	I.D.	O.D.	THICK	O.E.M.
520	FIL 1843	E-1074	1 1/16"	2 1/2"	1/4"	FRUEHAUF UXA-000002

SPRING SADDLE

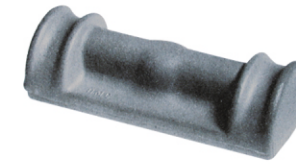
BEST SUITABLE : FRUEHAUF



SR. NO.	REF. NO.	EUCLID NO.	APPLICATION	O.E.M.
521	FIL 1853	E-2839	FOR SINGLE LEAF SPRING ONLY	UCC 5998-001

SPRING SADDLE

BEST SUITABLE : FRUEHAUF



SR. NO.	REF. NO.	EUCLID NO.	APPLICATION	O.E.M.
522	FIL 1863	E-2840	FOR MULTI LEAF SPRING ONLY	FRUEHAUF UCE-08801-001

REBOUND BOLT & NUT ASSEMBLY

BEST SUITABLE : FRUEHAUF



SR. NO.	REF. NO.	EUCLID NO.	INCLUDES	O.E.M.
523	FIL 1873	E-9372	1 5/8"-11 THREAD X 5" BOLT 1 5/8"-11 THREAD X NUT	FRUEHAUF FSP-005-03-054

EQUALIZER WASHER

BEST SUITABLE : FRUEHAUF



SR. NO.	REF. NO.	EUCLID NO.	I.D.	O.D.	THICK	O.E.M.
524	FIL 1883	E-2275	1 1/16"	2"	11/64"	FRUEHAUF FSP-007-02-010

CAST EQUALIZER

BEST SUITABLE : FRUEHAUF



SR. NO.	REF. NO.	EUCLID NO.	APPLICATION	O.E.M.
525	FIL 1893	E-2830	EARLY MODEL F-2 & CURRENT MODEL F-3 SUSPENSION. USE WITH E-1024 EQUALIZER BUSHING ASSEMBLY	FRUEHAUF FSP-007-02-010



OUTER WASHER

BEST SUITABLE : FRUEHAUF



SR. NO.	REF. NO.	EUCLID NO.	I.D.	O.D.	THICK	O.E.M.
526	FIL 1903	E-2832	1 5/16"	2 1/2"	1 1/16"	FRUEHAUF UXA-000356-002
527	FIL 1904	E-2833				FRUEHAUF UXA-000356-001

EQUALIZER BOLT

BEST SUITABLE : FRUEHAUF



SR. NO.	REF. NO.	EUCLID NO.	THREAD	L	O.E.M.
528	FIL 1914	E-1166	1"-14	7"	FRUEHAUF UCF-006703-900 FSP-005-03-028

EQUALIZER HANGER BUSHING

BEST SUITABLE : FRUEHAUF



SR. NO.	REF. NO.	EUCLID NO.	I.D.	O.D.	THICK	O.E.M.
529	FIL 1924	E-9370	1"	3 1/8"	1 1/8"	FRUEHAUF UCF-006703-001



EQUALIZER

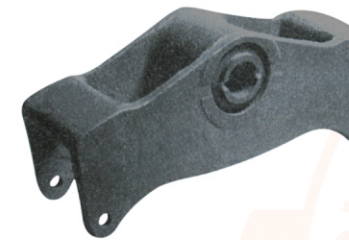
BEST SUITABLE : REYCO



SR. NO.	REF. NO.	EUCLID NO.	O.A.L.	BUSHING HOLE DIA	O.E.M.
530	FIL 1934	E-4813	16 1/2"	3 1/4"	TRANSPRO 0650-00 0758-00 0058-00

EQUALIZER TRUCK (FORD)

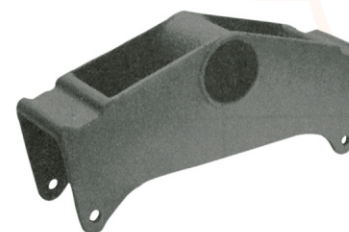
BEST SUITABLE : REYCO



SR. NO.	REF. NO.	EUCLID NO.	O.A.L.	O.E.M.
531	FIL 1944	E-2844	16"	REYCO 08996-01

EQUALIZER - TRAILER

BEST SUITABLE : REYCO



SR. NO.	REF. NO.	EUCLID NO.	O.A.L.	O.E.M.
532	FIL 1954	E-2846	18"	REYCO T-5427

EQUALIZER - TRUCK (STANDARD)

BEST SUITABLE : REYCO



SR. NO.	REF. NO.	EUCLID NO.	O.A.L.	O.E.M.
533	FIL 1964	E-2843 (SHOWN)	16"	REYCO 9120-01 14723-01
534	FIL 1965	E-3978	16"	



EQUALIZER BUSHING ASSEMBLY (TRAILER)

BEST SUITABLE : RYCO



SR. NO.	REF. NO.	EUCLID NO.	INCLUDES	O.E.M.
535	FIL 1975	E-3976 (RUBBER)	1 E-3972 SHAFT 2 E-1159 BUSHING 2 E-1986A WASHER 2 E-1987 SCREW 2 E-1975 LOCK WASHER	TK 18998

TORQUE ARM BUSHING ASSEMBLY

BEST SUITABLE : RYCO



SR. NO.	REF. NO.	EUCLID NO.	INCLUDES	O.E.M.
536	FIL 1985	E-1981 (RUBBER)	1 E-1980 BUSHING 1 E-901 BOLT 1 E-904 NUT	TK 7302
537	FIL 1986	E-3363	1 E-3362 BUSHING 1 E-901 BOLT	
538	FIL 1987	E-4834A (RUBBER)	1 E-904 NUT 1 E-1980 BUSHING 1 E-4833 BOLT	
539	FIL 1988	E-7749	1 E-9607 NUT 1 E-2983 LOCK NUT 1 E-7750 BUSHING 1 E-901 BOLT	

TORQUE ARM BUSHING ASSEMBLY

BEST SUITABLE : RYCO



SR. NO.	REF. NO.	EUCLID NO.	INCLUDES	O.E.M.
540	FIL 1998	E-1983	2 E- 1982 BUSHING 1 E- 900 BOLT 2 E- 907 WASHER 1 E- 903 NUT	TK 18997



TORQUE ARM BUSHING ASSEMBLY

BEST SUITABLE : REYCO



SR. NO.	REF. NO.	EUCLID NO.	INCLUDES	O.E.M.
541	FIL 2008	E-1075	2 E-1160 BUSHING 1 E- 1066 BOLT 2 E- 907 WASHER 1 E- 1828 NUT	TR 200

AXLE SEAT 5" ROUND AXLE

BEST SUITABLE : REYCO



SR. NO.	REF. NO.	EUCLID NO.	O.A.L.	O.E.M.
542	FIL 2018	E-5254	3/4"	REYCO 09730-01

TOP AXLE INVERTED U-BOLT MOUNTING (SHEET METAL)

BEST SUITABLE : REYCO



SR. NO.	REF. NO.	EUCLID NO.	O.A.L.	O.E.M.
543	FIL 2028	E-2907		REYCO 0077-00
544	FIL 2029	E-2907		

BOTTOM PLATE FOR 5" ROUND AXLE

BEST SUITABLE : REYCO



SR. NO.	REF. NO.	EUCLID NO.	O.A.L.	O.E.M.
545	FIL 2039	E-2909		6538-00

TORQUE ARM BUSHING (AXLE SEAT END)

BEST SUITABLE : RYCO



SR. NO.	REF. NO.	EUCLID NO.	I.D.	O.D.	LENGTH	O.E.M.
546	FIL 2049	E-1980 (RUBBER)	7/8"	1 29/32"	3"	REYCO 09729-01 REYCO 13945-01
547	FIL 2050	E-3362 (RUBBER)	7/8"	2 1/32"	3"	FORD E1HT5781-EA